

- > Port size: G1/8
  - > Visiwink indicator when power take-off is engaged
  - > Pneumatic or manual disengage
  - > Suitable for single or double acting cylinders
- > Ideally suited to in-cab mounting



### Technical features

#### Medium:

Compressed air, filtered, lubricated and non-lubricated

#### Operation:

Spool valve pull/push with pilot reset

#### Ports:

G1/8

#### Operating pressure:

2 ... 10 bar (29 ... 145 psi)

#### Flow:

Size	l/min	Cv	Kv
G1/8	335	0,34	0,295

Mounting:

Through-holes in valve body

#### Ambient/Media temperature:

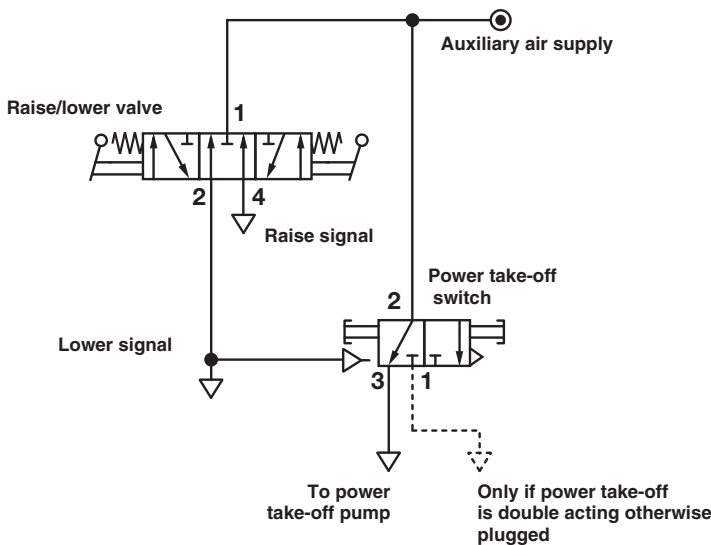
0 ... +70°C (+32 ... +158°F)

Air supply must be dry enough to avoid ice formation at temperatures below +2°C (+35°F).

#### Materials:

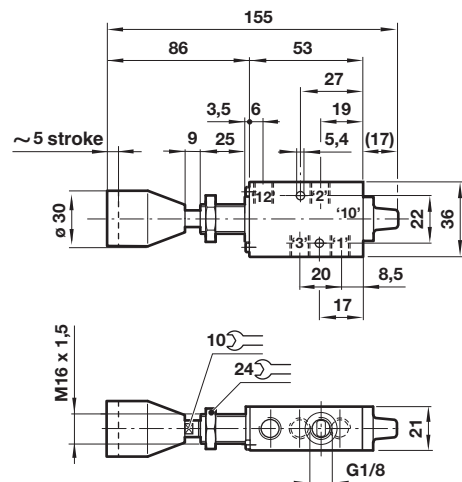
Body: Diecast zinc  
 End cover: Glass-filled PA  
 Operators: Plastic  
 Seals: NBR

### Typical circuit for power take-off interlock



### Dimensions

Dimensions in mm  
 Projection/First angle



### Warning

These products are intended for use in Commercial Vehicle transport systems only. Do not use these products where pressures and temperatures can exceed those listed under

#### »Technical features/data«.

Before using these products with fluids other than those specified, for non-industrial applications, life-support systems or other applications not within published specifications, consult IMI Precision Engineering, Norgren Ltd.

Through misuse, age, or malfunction, components used in fluid power systems can fail in various modes.

The system designer is warned to consider the failure modes of all component parts used in fluid power systems and to provide adequate safeguards to prevent personal injury or damage to equipment in the event of such failure.

System designers must provide a warning to end users in the system instructional manual if protection against a failure mode cannot be adequately provided.

System designers and end users are cautioned to review specific warnings found in instruction sheets packed and shipped with these products.